

Border Lite

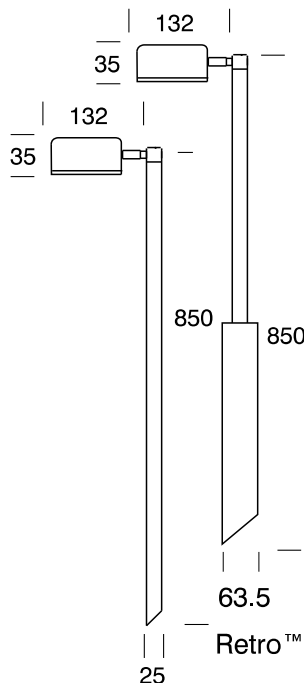
Cat. No. BL
Cat. No. BL/R



The Border Lite is ideal for path lighting giving a wide spread of light with no upward projection. This luminaire has a fully adjustable arm allowing 360 degree rotation and 0 - 90 degree elevation.

The Retro™, which is a mains option, avoids the need to bury a transformer. The 110/240-12 volt electronic transformer is built into the pole and is a double insulated safety isolating transformer, this changes the luminaire to an IP56 rating.

This luminaire is equipped with Hunza's Anti-Syphon™ (not Retro luminaires) system which has been designed to counter the problem of wicking (siphoning) of water through the supply cable into the lamp housing, causing water to condense and dramatically shorten the life of the lamp, lamp holder and luminaire.



Ordering Information

Luminaire Type

BL - Border Lite

Material/Finish

BK - Black
BZ - Bronze
GN - Green
MS - Metallic Silver
WH - White

Accessories

CJK150 - CJK150 Cable Joint Kit
DCL - Clear Lens
/R - Retro™ Transformer
110/240-12 volt
SSP/G - Hunza® Super Spike



Ordering Example: BL BZ - Border Lite in Bronze

BL/R BK - Border Lite Retro™ Black

SSP/G - Hunza® Super Spike

(Accessories ordered separately)



FACTORY: Ph: 64-9-528 9471 Fax: 64-9-528 9361.
USA: Ph. 310 560 7310 Fax. 1 877 692 4589.
hunza@hunza.co.nz www.hunza.co.nz
Specifications may change without notice.

130 Felton Mathew Ave, Glen Innes, Auckland, New Zealand.
3237 Long Island St, W. Sacramento, California 95691, USA.
Manufactured in New Zealand.

Ver 1.3

© 2006 Hunza Holdings Ltd

Luminaire Construction

Head:

Cast from virgin high corrosion resistant CC401 low copper aluminium alloy, with chromate substrate and high UV resistant polyester powder coat -

Colours Black, Bronze, Green, Metallic Silver, White.

Poles: Aluminium, 25.4mm (1") x 850mm (33½") tube.

Retro™: Pole - 25.4mm (1") x 410mm (16") tube.

Transformer Pole 63.5mm (2½") x 440mm (17½").

Mounting

Pole 850mm (33½") directly mounted into the earth or for extra stability in sand or loose ground use a Hunza® Super Spike. Retro™ - set in concrete.

Features

Cable:

Water resistant rubber and PVC with HUNZA® Anti-Syphon™ water barrier system.

Lens:

47mm (1 13/16") x 47mm (1 13/16") x 3mm(1/8") Frosted tempered shatter resistant glass.
Life Time Warranty.

Gaskets:

Nytril rubber, 150°c (302°f).

Lamp Holder:

GU4 - 350°c (662°f) ceramic multi contact lamp holder with 250°c (480°f) teflon cables.

Accessories:

Cable Joint Kit (Cat. CJK 50).
Not approved for USA /Canada.

Hunza® Super Spike, not Retro™ option (Cat. SSP/G).

Clear Lens (Cat. BCL).

Retro™ transformer 110/240-12 volt (Cat. /R) IP56.

Swivel :

360° rotation and 0 - 90° elevation, solid brass with anti rust spring.

Standards

IP56 / IP66  UL1838

Luminaire Weight

12 volt:
.500kg (1lb 1oz)

Retro™:
1.845kg (4lb 1oz)

Power Supply

HUNZA® Inground or Wall Mount Transformer: not included.

RETRO™ IP56

HUNZA® 110/240-12 volt ac silicone encapsulated electronic transformer is built into the pole. Dimmable with a suitable leading edge dimmer. * Note see page 7.3 for details.

USA and Canada

HUNZA® Wall Mount Transformer: not included.

Luminaire: supplied with

GU4 Bi - Pin 20 watt lamp max.

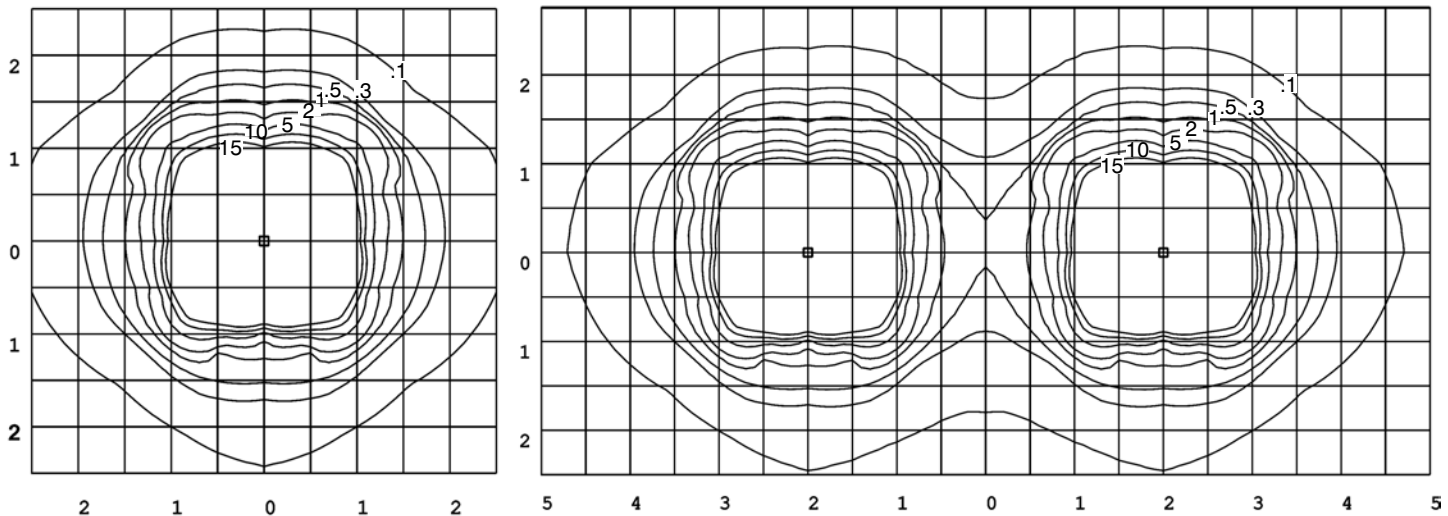
Retro™ GU4 Bi - Pin 20 watt lamp max.

USA and Canada

GU4 Bi - Pin 20 watt lamp max.

Retro™ GU4 Bi - Pin 20 watt lamp

Border Lite GU4 20 watt lamp lens height 600mm (24")



FACTORY: Ph: 64-9-528 9471 Fax: 64-9-528 9361.

USA: Ph. 310 560 7310 Fax. 1 877 692 4589.

hunza@hunza.co.nz www.hunza.co.nz

Specifications may change without notice.

130 Felton Mathew Ave, Glen Innes, Auckland, New Zealand.

3237 Long Island St, W. Sacramento, California 95691, USA.

Manufactured in New Zealand.

Ver 1.3

© 2006 Hunza Holdings Ltd